



PGA Professional  
Thomas Hide



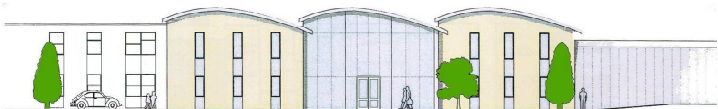
PGA Professional  
Scott Rusbridge



# The Colne College



*'Providing quality education and training to realise the player's true potential'*

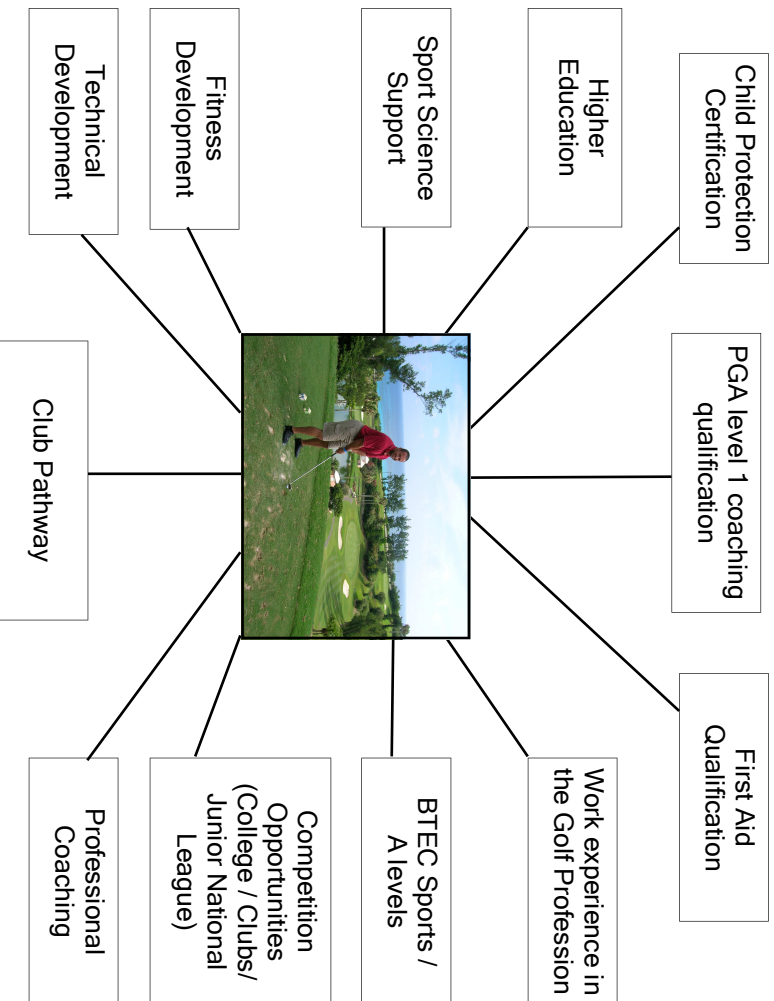


**The Colne Community School and College**  
Church Road, Brightlingsea, Colchester, Essex, CO7 0QL  
Telephone No: 01206 303 511 Fax No: 01206 302 258  
Email: mail@colne.essex.sch.uk

## COLNE GOLF ACADEMY SUPPORT PACKAGE

*"An opportunity to gain academic qualifications and access quality Golf coaching. The development of the students physical conditioning will support the intensive coaching and enable students to make improvements in their game. With regular mentoring students will be able to combine all disciplines and, alongside coaching qualifications, will be able to progress into sports related occupations and play Golf at a higher level!"*

**Phil Coleman**  
Faculty Manager for PE/Sport



The Colne Golf Academy is an exciting venture between The Colne Community School and College and Coastal Golf Academy. Places at the Golf Academy are open to school leavers who demonstrate the potential and flair for golf and who are able to combine studies as part of the programme.



*"This is a great opportunity for players to gain an excellent education combined with regular high quality technical and tactical coaching. This provision allows all members of the Colne Golf Academy to fulfil their potential"*

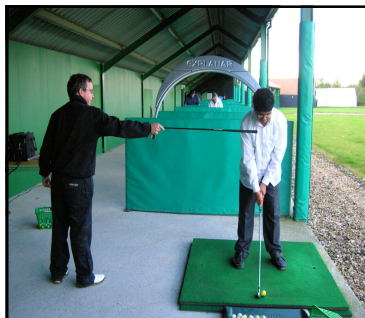
**Jon Taylor**, Director of Sport

## The Aim

The Colne Golf Academy will provide quality education and training to realise the players true potential.

By combining top class golf coaching with full-time education and other training opportunities, the Colne Golf Academy is able to offer a best route for students to progress into the sports industry and Further Education.

*"The Colne Golf Academy provides an exciting opportunity for promising golfers in North East Essex. The aim of the academy is to give students the chance to develop as golfers and also to give an overall understanding of the golf industry. We have the use of local golf clubs practice and course facilities, which will enable us to provide quality coaching. Fitness including flexibility and core stability (the world's best golfers are focusing heavily on fitness) will ensure students have every opportunity to get into the correct shape for achieving their potential"*



## Academic Programme

Students access full-time studies alongside their Golf coaching. Students follow BTEC National Diploma equivalent to three A levels.

In addition, students can also achieve coaching awards, other National Governing Body qualifications, leadership awards, sports injuries treatment qualifications, as well as opportunities to coach young people in the community.



*"The facilities and resources offered by the Colne Golf Academy will undoubtedly play a tremendous part in the development and success of these potential athletes"*

**Michael Pulford**, Sports ICT support



## Technical Programme

The programme will consist of two to three hours per day of coaching (and/or matches) covering all technical and tactical aspects of the game. In addition players will be given guidance on individual fitness programmes including, strength, core training, flexibility and endurance work based on fitness profile sessions.

Advice will also be given on diet, nutrition and hygiene together with comprehensive sports injury back up.

## Competitive Opportunities

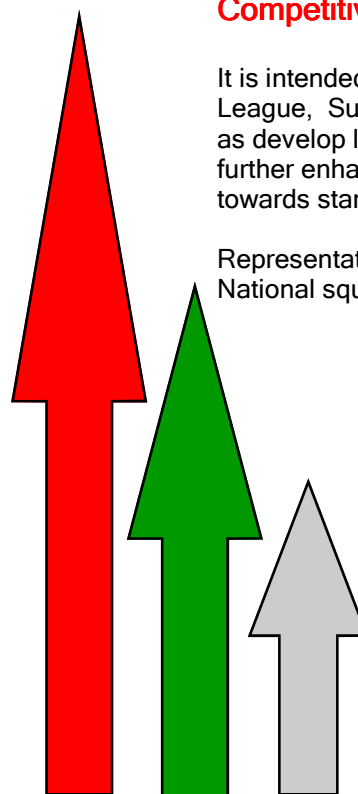
It is intended to enter the students into the Essex Colleges League, Suffolk League and Junior National League as well as develop links to clubs. Established links to clubs will be further enhanced to give players the opportunities to strive towards standards needed at this level.

Representative honours may include County, Regional and National squad selection.

## Progression

From the Golf programme, students may progress to further education, act as a stepping stone onto the Professional Golfers Association qualification or a career in a number of different areas including Golf Club Management, Sales and Marketing, Golf Fitness and Biomechanics, Sports Therapy, Greenkeeping to name but a few.

The Colne already has established links with a number of Further and Higher Education providers including Essex University.



**What should I do next?**

To find out more about the Golf Academy and the associated courses and opportunities, contact us immediately by filling in the tear-off slip and returning it to the Colne Golf Academy.

Name: \_\_\_\_\_

Date of Birth: \_\_\_\_\_

Address: \_\_\_\_\_

\_\_\_\_\_

\_\_\_\_\_

Postcode: \_\_\_\_\_

Telephone No: \_\_\_\_\_

Email: \_\_\_\_\_

Current Golf Club: \_\_\_\_\_

Club Secretary: \_\_\_\_\_

Contact Telephone / Email: \_\_\_\_\_

Current Handicap (exact): \_\_\_\_\_

Secondary School attended: \_\_\_\_\_

*There may be a charge required towards kit costs.*

**What should I do next?**

To find out more about the Golf Academy and the associated courses and opportunities, contact us immediately by filling in the tear-off slip and returning it to the Colne Golf Academy.

Name: \_\_\_\_\_

Date of Birth: \_\_\_\_\_

Address: \_\_\_\_\_

\_\_\_\_\_

\_\_\_\_\_

Postcode: \_\_\_\_\_

Telephone No: \_\_\_\_\_

Email: \_\_\_\_\_

Current Golf Club: \_\_\_\_\_

Club Secretary: \_\_\_\_\_

Contact Telephone / Email: \_\_\_\_\_

Current Handicap (exact): \_\_\_\_\_

Secondary School attended: \_\_\_\_\_

*There may be a charge required towards kit costs.*

PLEASE  
AFFIX  
STAMP  
HERE

COLNE GOLF ACADEMY  
The Colne Community School and College  
Church Road  
Brightlingsea  
COLCHESTER  
Essex  
CO7 0QL

PLEASE  
AFFIX  
STAMP  
HERE

COLNE GOLF ACADEMY  
The Colne Community School and College  
Church Road  
Brightlingsea  
COLCHESTER  
Essex  
CO7 0QL